
OVERVIEW

ULTRA ITALIC CAPS

THE EAST-SIDE MOTEL

EXTRA THIN ITALIC WITH
STANDARD LIGATURES

Amazingly fine

REGULAR WITH
STANDARD LIGATURES

But you can't beat any geek off the street

BOLD SMALL-CAPS

WHISKEY

LIGHT ITALIC WITH
DISCRETIONARY LIGATURES
AND STYLISTIC SET #2

Weathermen Forecast

BLACK CAPS WITH
LINING FIGURES

MR. SAGAN QUICKLY SMOKED 50 GREEN BEZIERS

THIN

Regulate 213

ULTRA ITALIC SMALL-CAPS

LARGE HERBIVORES

MEDIUM WITH SMALL-CAPS
AND STANDARD LIGATURES

They had 130 official grey USAF flight jackets

BOLD ITALIC

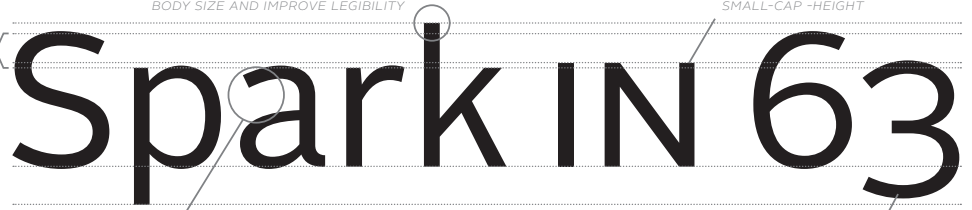
The Empress & Rasputin

DESIGN STRUCTURE

SHORT CAP-HEIGHT AND TALL X-HEIGHT GIVE A LARGER-THAN-USUAL APPEARANCE AND IMPROVE LEGIBILITY

TALL ASCENDERS BALANCE THE LARGE BODY SIZE AND IMPROVE LEGIBILITY

OPTICALLY CORRECT SMALL-CAP-HEIGHT



OPEN STRUCTURE IMPROVES FLOW AND AVOIDS CLOSING UP AT SMALL SIZES

DEFAULT PROPORTIONAL-WIDTH OLD-STYLE FIGURES PROVIDE A MORE REFINED DEFAULT STYLE

WEIGHTS & STYLES

Alright Sans Extra Thin
 Alright Sans Thin
 Alright Sans Light
 Alright Sans Regular
 Alright Sans Medium
 Alright Sans Bold
 Alright Sans Black
 Alright Sans Ultra

& Extra Thin Italic
 & Thin Italic
 & Light Italic
 & Regular Italic
 & Medium Italic
 & Bold Italic
 & Black Italic
 & Ultra Italic

OPENTYPE FEATURES

aa Lowercase to SMALLCAPS
 ABCdef -> ABCDEF

15 Old-style figures (default)
 0123456789

H^a Superscript alphabet
 ABCdef -> ABC^{def}

AA Uppercase to SMALLCAPS
 ABCdef -> ABCDEF

15 Lining figures
 0123456789

H_a Scientific inferior alphabet
 ABCdef -> ABC_{def}

AA All Uppercase
 ABCdef -> ABCDEF

15 Tabular old-style figures
 0123456789

H² Superscript figures
 ABC123 -> ABC¹²³

[A] Uppercase-positional forms
 A-B@def† -> A-B@DEF†

15 Tabular lining figures
 0123456789

H² Ordinal figures
 ABC123 -> ABC¹²³

[A] SMALLCAP-positional forms
 A-B@def† -> A-B@DEF†

1/2 Arbitrary fractions
 4 13/20 -> 4¹³/₂₀

H₂ Subscript figures
 ABC123 -> ABC₁₂₃

fi Standard ligatures
 finish -> finish

&& Stylistic Set #1
 A&Co. -> A&Co.

H₂ Scientific inferior figures
 ABC123 -> ABC₁₂₃

ct Discretionary ligatures
 section -> section

aa Stylistic Set #2
 gag -> gag

→ Contextual arrows
 (-^ / ^ ->) -> (-^ / ^ ->)

TEXT SAMPLES

LOREM IPSUM DOLOR SIT AMET, CONSECTETUR ADIPI-
SCING ELIT. Quisque dui quam, vulputate sit amet
suscipit nec, sollicitudin in risus. *Nulla mattis nibh
non justo sollicitudin congue. In porta ante sed quam
lacinia gravida.* Nulla id lacus dictum sapien ullam-
corper accumsan vel ac tellus. Phasellus est eros,
luctus a tincidunt eu, accumsan in arcu. Morbi justo
odio, condimentum non mollis vel, faucibus id neque.
**Suspendisse ut orci nibh. Pellentesque id nulla non
enim elementum fringilla in a augue. AENEAN METUS
AUGUE, FEUGIAT EGET TINCIDUNT AT, HENDRERIT A
SEM. Cras ullamcorper, ligula eu bibendum tincidunt,
elit metus sagittis sapien, vitae condimentum magna
ligula ut turpis. Vivamus aliquam dictum lectus, vel
vestibulum turpis ultricies ac. In blandit, arcu sit
amet bibendum placerat, nisl ipsum congue neque,
sed molestie sapien odio in ante. Proin elementum
aliquam elit eget facilisis.** Nam vestibulum fringilla
rhoncus. Ut minima veniam, quis nostrum exercitatio-
nem ullam corporis suscipit laboriosam, nisi ut aliquid
commodi consequatur? Aenean ac lorem felis.

ALRIGHT SANS EXTRA THIN & REGULAR 9PT/12PT

LOREM IPSUM DOLOR SIT AMET, CONSECTETUR ADIPI-
SCING ELIT. Quisque dui quam, vulputate sit amet
suscipit nec, sollicitudin in risus. *Nulla mattis nibh
non justo sollicitudin congue. In porta ante sed quam
lacinia gravida.* Nulla id lacus dictum sapien ullam-
corper accumsan vel ac tellus. Phasellus est eros,
luctus a tincidunt eu, accumsan in arcu. Morbi justo
odio, condimentum non mollis vel, faucibus id neque.
**Suspendisse ut orci nibh. Pellentesque id nulla non
enim elementum fringilla in a augue. AENEAN ME-
TUS AUGUE, FEUGIAT EGET TINCIDUNT AT, HENDRERIT
A SEM. Cras ullamcorper, ligula eu bibendum tincidunt,
elit metus sagittis sapien, vitae condimentum
magna ligula ut turpis. Vivamus aliquam dictum
lectus, vel vestibulum turpis ultricies ac. In blandit,
arcu sit amet bibendum placerat, nisl ipsum con-
gue neque, sed molestie sapien odio in ante. Proin
elementum aliquam elit eget facilisis.** Nam vestibulum
fringilla rhoncus. Ut minima veniam, quis nostrum ex-
ercitationem ullam corporis suscipit laboriosam, nisi ut
aliquid commodi consequatur? Aenean ac lorem felis.

ALRIGHT SANS THIN & MEDIUM 9PT/12PT

LOREM IPSUM DOLOR SIT AMET, CONSECTETUR ADIPI-
SCING ELIT. Quisque dui quam, vulputate sit amet
suscipit nec, sollicitudin in risus. *Nulla mattis nibh
non justo sollicitudin congue. In porta ante sed quam
lacinia gravida.* Nulla id lacus dictum sapien ullam-
corper accumsan vel ac tellus. Phasellus est eros,
luctus a tincidunt eu, accumsan in arcu. Morbi justo
odio, condimentum non mollis vel, faucibus id neque.
**Suspendisse ut orci nibh. Pellentesque id nulla non
enim elementum fringilla in a augue. AENEAN ME-
TUS AUGUE, FEUGIAT EGET TINCIDUNT AT, HENDRE-
RIT A SEM. Cras ullamcorper, ligula eu bibendum
tincidunt, elit metus sagittis sapien, vitae condi-
mentum magna ligula ut turpis. Vivamus aliquam
dictum lectus, vel vestibulum turpis ultricies ac.
In blandit, arcu sit amet bibendum placerat, nisl
ipsum congue neque, sed molestie sapien odio
in ante. Proin elementum aliquam elit eget facilisis.**
Nam vestibulum fringilla rhoncus. Ut minima veniam,
quis nostrum exercitationem ullam corporis suscipit
laboriosam, nisi ut aliquid commodi consequatur?
Aenean ac lorem felis.

ALRIGHT SANS LIGHT & BOLD 9PT/12PT

LOREM IPSUM DOLOR SIT AMET, CONSECTETUR ADIPI-
SCING ELIT. Quisque dui quam, vulputate sit amet
suscipit nec, sollicitudin in risus. *Nulla mattis nibh
non justo sollicitudin congue. In porta ante sed
quam lacinia gravida.* Nulla id lacus dictum sapien
ullamcorper accumsan vel ac tellus. Phasellus est
eros, luctus a tincidunt eu, accumsan in arcu. Morbi
justo odio, condimentum non mollis vel, faucibus id
neque. **Suspendisse ut orci nibh. Pellentesque id
nulla non enim elementum fringilla in a augue.
AENEAN METUS AUGUE, FEUGIAT EGET TINCIDUNT
AT, HENDRERIT A SEM. Cras ullamcorper, ligula eu
bibendum tincidunt, elit metus sagittis sapien,
vitae condimentum magna ligula ut turpis. Viva-
mus aliquam dictum lectus, vel vestibulum turpis
ultricies ac. In blandit, arcu sit amet bibendum
placerat, nisl ipsum congue neque, sed molestie
sapien odio in ante. Proin elementum aliquam elit
eget facilisis.** Nam vestibulum fringilla rhoncus. Ut
minima veniam, quis nostrum exercitationem ullam
corporis suscipit laboriosam, nisi ut aliquid commodi
consequatur? Aenean ac lorem felis.

ALRIGHT SANS REGULAR & BLACK 9PT/12PT

STYLE WATERFALL

Foxy nymphs grab quick-lived waltz. ULTRA

Sphinx of black quartz judge my vow. BLACK

Quick zephyrs blow, vexing daft Jim. BOLD

How quickly daft jumping zebras vex. MEDIUM

Waltz, nymph, for quick jigs vex Bud. REGULAR

The five boxing wizards jump quickly. LIGHT

Judges vomit; few quiz pharynx block. THIN

Jackdaws love my big sphinx of quartz. EXTRA THIN

Quick waxy bugs jump the frozen veldt. ULTRA ITALIC

Mr. Jock, TV quiz Ph.D., bags few lynx. BLACK ITALIC

Pack my box with five dozen liquor jugs. BOLD ITALIC

Cozy sphinx waves quart jug of bad milk. MEDIUM ITALIC

Thief, give back my prized wax jonquils. REGULAR ITALIC

Blowzy red vixens fight for a quick jump. LIGHT ITALIC

Five big quacking zephyrs jolt my wax bed. THIN ITALIC

Quick brown fox jumps over the lazy dog. EXTRA THIN ITALIC

BASIC CHARACTERS
EXTRA THIN

A B C D E F G H I J K L M N

O P Q R S T U V W X Y Z

A B C D E F G H I J K L M N

O P Q R S T U V W X Y Z

a b c d e f g h i j k l m n

o p q r s t u v w x y z

, . : ; ' " " " " " " " " ! ? ? @ * (/) [\] & &

0 1 2 3 4 5 6 8 7 9 # € \$ + %

0 1 2 3 4 5 6 8 7 9 # € \$ + %

BASIC CHARACTERS
EXTRA THIN ITALIC

A B C D E F G H I J K L M N

O P Q R S T U V W X Y Z

A B C D E F G H I J K L M N

O P Q R S T U V W X Y Z

a b c d e f g g h i j k l m n

o p q r s t u v w x y z

., ' ' ' ' ' ' ' ' ' ' ! ? ? @ * (/) [\] & &

0 1 2 3 4 5 6 8 7 9 # € \$ + %

0 1 2 3 4 5 6 8 7 9 # € \$ + %

BASIC CHARACTERS

THIN

A B C D E F G H I J K L M N

O P Q R S T U V W X Y Z

A B C D E F G H I J K L M N

O P Q R S T U V W X Y Z

a b c d e f g h i j k l m n

o p q r s t u v w x y z

.,:;'"''''''''''!??@*(/)[\]&&

0 1 2 3 4 5 6 8 7 9 # € \$ + %

0 1 2 3 4 5 6 8 7 9 # € \$ + %

BASIC CHARACTERS
THIN ITALIC

A B C D E F G H I J K L M N

O P Q R S T U V W X Y Z

A B C D E F G H I J K L M N

O P Q R S T U V W X Y Z

a b c d e f g g h i j k l m n

o p q r s t u v w x y z

.,; ' ' ' ' ' ' ' ' ' ' ! ? ? @ * (/) [\] & &

0 1 2 3 4 5 6 8 7 9 # € \$ + %

0 1 2 3 4 5 6 8 7 9 # € \$ + %

BASIC CHARACTERS
LIGHT

ABCDEFGHIJKLMN

OPQRSTUVWXYZ

ABCDEFGHIJKLMN

OPQRSTUVWXYZ

abcdefghijklmn

opqrstuvwxyz

.,:;""'''''!??@*(/)[\]&&

0123456879 #€\$+%

0123456879 #€\$+%

BASIC CHARACTERS
LIGHT ITALIC

ABCDEFGHIJKLMNOPQRSTUVWXYZ

ABCDEFGHIJKLMNOPQRSTUVWXYZ

ABCDEFGHIJKLMNOPQRSTUVWXYZ

ABCDEFGHIJKLMNOPQRSTUVWXYZ

abcdefghijklmnopqrstuvwxyz

abcdefghijklmnopqrstuvwxyz

.,:;'"''''''''!??@*(/)[\]&&

0123456879 #€\$+%

0123456879 #€\$+%

BASIC CHARACTERS
REGULAR

ABCDEFGHIJKLMN

OPQRSTUVWXYZ

ABCDEFGHIJKLMN

OPQRSTUVWXYZ

abcdefghijklmn

opqrstuvwxyz

.,:;“”‘’””!??@*(/)[\]&&

0123456879 #€\$+%

0123456879 #€\$+%

BASIC CHARACTERS
REGULAR ITALIC

ABCDEFGHIJKLMNOPQRSTUVWXYZ

ABCDEFGHIJKLMNOPQRSTUVWXYZ

ABCDEFGHIJKLMNOPQRSTUVWXYZ

ABCDEFGHIJKLMNOPQRSTUVWXYZ

abcdefghijklmnopghijklmn

opqrstuvwxyz

.,:;'"''''''''!??@*(/)[\]&&

0123456879 #€\$+%

0123456879 #€\$+%

BASIC CHARACTERS
MEDIUM

ABCDEFGHIJKLMN

OPQRSTUVWXYZ

ABCDEFGHIJKLMN

OPQRSTUVWXYZ

abcdefghijklmn

opqrstuvwxyz

.,:;“”“”””!?!?@*(/)[\]&&

0123456879 #€\$+%

0123456879 #€\$+%

BASIC CHARACTERS
MEDIUM ITALIC

ABCDEFGHIJKLMN

OPQRSTUVWXYZ

ABCDEFGHIJKLMN

OPQRSTUVWXYZ

abcdefghijklmn

opqrstuvwxyz

.,:;“”‘’””!??@*(/)[\]&&

0123456879 #€\$+%

0123456879 #€\$+%

BASIC CHARACTERS

BOLD

ABCDEFGHIJKLMN

OPQRSTUVWXYZ

ABCDEFGHIJKLMN

OPQRSTUVWXYZ

abcdefghijklmn

opqrstuvwxyz

.,:;“”“”””!??@*(/)[\]&&

0123456879 #€\$+%

0123456879 #€\$+%

BASIC CHARACTERS
BOLD ITALIC

ABCDEFGHIJKLMN

OPQRSTUVWXYZ

ABCDEFGHIJKLMN

OPQRSTUVWXYZ

abcdefghijklmn

opqrstuvwxyz

.,:;“”‘’””!??@*(/)[\]&&

0123456879 #€\$+%

0123456879 #€\$+%

BASIC CHARACTERS
BLACK

ABCDEFGHIJKLMN

OPQRSTUVWXYZ

ABCDEFGHIJKLMN

OPQRSTUVWXYZ

abcdefghijklmn

opqrstuvwxyz

.,;:”“””””!??@*(/)[\]&&

0123456879 #€\$+%

0123456879 #€\$+%

BASIC CHARACTERS
BLACK ITALIC

ABCDEFGHIJKLMN

OPQRSTUVWXYZ

ABCDEFGHIJKLMN

OPQRSTUVWXYZ

aabcdefghijklmn

opqrstuvwxyz

.,;:”“””””!??@*(/)[\]&&

0123456879 #€\$+%

0123456879 #€\$+%

BASIC CHARACTERS
ULTRA

ABCDEFGHIJKLMN

OPQRSTUVWXYZ

ABCDEFGHIJKLMN

OPQRSTUVWXYZ

abcdefghijklmn

opqrstuvwxyz

.,:;“”‘’””””””””””!?!?@*(/)[\]&&

0123456879 #€\$+%

0123456879 #€\$+%

BASIC CHARACTERS
ULTRA ITALIC

ABCDEFGHIJKLMN

OPQRSTUVWXYZ

ABCDEFGHIJKLMN

OPQRSTUVWXYZ

abcdefghijklmn

opqrstuvwxyz

.,;:”‘”‘”‘”‘!?!?@*(/)[\]&&

0123456879 #€\$+%

0123456879 #€\$+%